

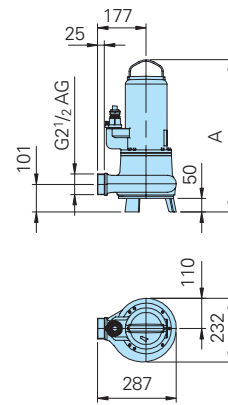
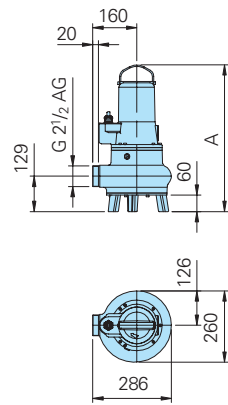
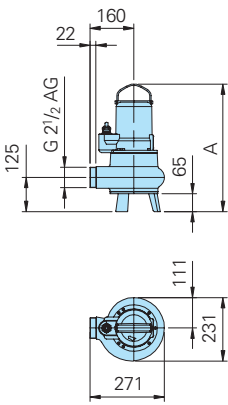
Dimensions and Installations (all dimensions in mm)

Free standing pump with base stand

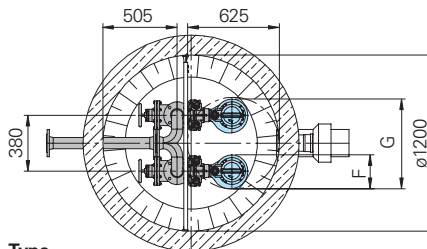
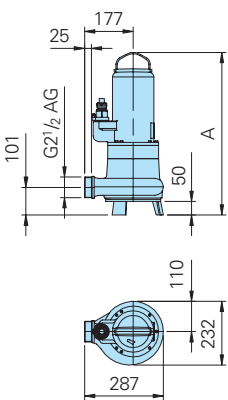
TP50V17/2W+D(Ex)

TP50V11/4W(D)(Ex)
TP50V23/4D(Ex)

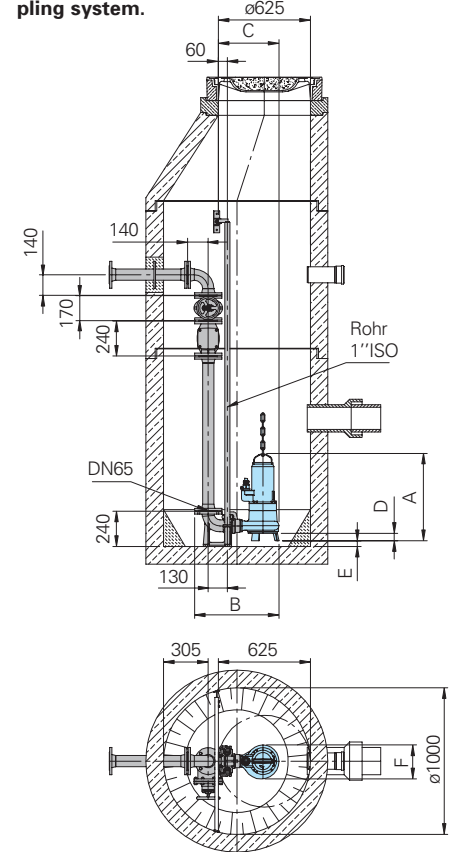
TP50V40/2D(Ex),
TP50V26/2D(Ex), TP50V13/4D(Ex)



TP50V50/2DT(DEX)



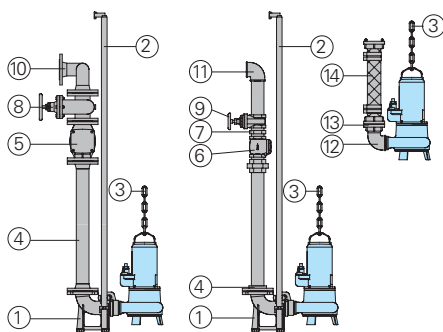
Permanent sump installation with auto-coupling system.



Type

Type	A	B	C	D	E	F	G
TP50V50/2DT(DEX)	593	575	412	50	39	232	612
TP50V40/2D(Ex)	555	575	412	50	39	232	612
TP50V13/4D(Ex), TP50V26/2D(Ex)	518	575	412	50	39	232	612
TP50V17/2W+D(Ex)	465 (472)	559	396	65	16	231	611
TP50V11/4W+D(Ex)	535	573	411	60	11	260	640
TP50V23/4D(Ex)	572	573	411	60	11	260	640

Accessories



Part Description	Dimension	Part No.
① Auto-coupling system with Cast iron auto-coupling with flange		
Cast iron flanged pump coupling		
Cast iron upper slide rail bracket		
KK65/R2 1/2"	DN65/R2 1/2"	8604015
○ Auto-coupling system complete or partial in stainless steel	all types	on request

Part Description	Dimension	Part No.
○ Screw-kits for installation of coupling system		on request
○ Inter. upper slide rail bracket	Ø 1" for KK65	7323714
② Guide rails, pair, per m steel galvanized	1" dia.	2190135
stainless steel	1" dia.	2190252
③ Pump chain sets, testet. With shackle, One- or Two-strand, different lengths and load capacities		on request
④ Threaded flange	DN 65/ BSP 2 1/2" F	2215060
Flanged pipe	DN 65	On request
⑤ Cast iron swing check	DN 65	2212805
⑥ Cast iron swing check	BSP 2 1/2" F	2212513
⑦ Galvanized double nipple	BSP 2 1/2" M	2009025
⑧ Cast iron gate valve	DN 65	2216065

Part Description	Dimension	Part No.
⑨ Bronze gate valve	BSP 2 1/2" F	2216025
⑩ 90° flanged elbow	DN 65	2153301
Flanged Y-piece for twin-pump arrangement	3 x DN 65	2160002
	DN 65/65/80	2160004
⑪ 90° galvanized elbow	BSP2 1/2" F	2113610
T-piece for twin-pump arrangement	BSP2 1/2" F	2114308
⑫ 90° galvanized elbow	BSP 2 1/2" F/M	2111705
⑬ STORZ-fixed coupling	B-2 1/2" F	2010502
STORZ-hose coupling	B-75 mm dia.	2013502
⑭ Synthetic pressure hose with rubber lining	length 10 m	2611210
	length 15 m	2611215
and couplings,	length 20 m	2611220
B-75 mm dia.	length 30 m	2611230
Reinforced hose, per m	75 mm dia.	2632075
Hose bands	85/20	2308520
○ Control panel for single or twin pump stations for automatic operation		On request